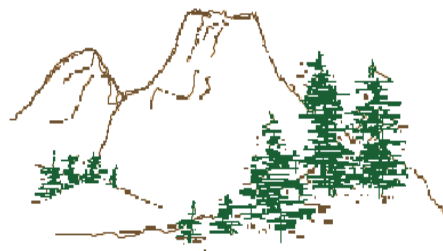




# SARNEWS

© 2022 SARCI



DECEMBER 2022

TUCSON, ARIZONA

VOL.47 No.12

## SEARCH AND RESCUE COUNCIL

<http://www.sarci.org>

### SARCI BOARD MEETINGS

by SARNews, [sarcinewsletter@sarci.org](mailto:sarcinewsletter@sarci.org)

SARCI Board meetings are held at the SARA House at 19:30 (7:30 pm) on the third Wednesday of January, April, July, and October. These meetings are being held in-person and on-line. Ask if you are interested in attending.

### SABINO CANYON PARKING

With the new electric trams in Sabino, we will NOT be able to leave unattended vehicles at Tram Stop 9. During hours of Canyon Crawler operation, everyone will need to park at TS-8 and be shuttled to TS-9. The ONLY vehicles at TS-9 will be IC and Ops vehicles attended with drivers so they can move as the tram passes through. SPEED LIMIT 15 MPH

### SARCI ROSTERS

by SARCI Records, [records@sarci.org](mailto:records@sarci.org)

Rosters are appropriate and requested for on-line activities, including meetings and training sessions. A simple list of names and in/out times are sufficient (send the lists to Records). Bonus points are available for anyone who adds that information to a copy of the file "SARCI\_Mission\_Response\_Log\_Data\_Entry" (use normal login):

[http://www.sarci2.org/data/SARCI\\_Mission\\_Response\\_Log\\_Data\\_Entry\\_201810.xlsx](http://www.sarci2.org/data/SARCI_Mission_Response_Log_Data_Entry_201810.xlsx)

### EMERGENCY RESPONSE MANAGER HELP

by Brooke Fawcett, [Brooke.Fawcett@sarci.org](mailto:Brooke.Fawcett@sarci.org)

Questions about how to use all these capabilities - and more - in ERM? Please don't hesitate to contact us!

(Just open your ERM app, click Contacts, and type in "Support.")

Do you know about Mission Data? It can be found by clicking "Responses" and then you'll see the "Mission Data" button near the top of the screen. To add your own information - coords, photos, team updates, etc - click "GPS" from the home screen, and then use the "+" button to the right of "Current Position."

## CONTENTS

SEARCH AND RESCUE COUNCIL .....	1
PIMA CO. SEARCH & RECOVERY DIVERS .....	2
SOUTHERN AZ MOUNTED SEARCH AND RESCUE.....	2
SOUTHWEST RESCUE DOGS, INC. ....	2
NEOTOMA COMPOSITE SQUADRON, C.A.P. ....	2
SOUTHERN ARIZONA RESCUE ASSOCIATION .....	3
SABINO OVERFLOW PARKING LOT OPENS FOR WINTER.....	3
BOARD OF DIRECTORS –COVID-19 DIRECTIVES .....	3
COVID AND FLU .....	3
OEC CORNER .....	3
SARA INCIDENT MANAGEMENT TEAM .....	3
WINTER SKILLS CLASSROOM SESSION.....	4
MEMBERSHIP COMMITTEE .....	4
TECHNICAL SKILLS.....	5
ACCORDING TO HISTORY .....	5
CATALINA RANGER DISTRICT TRAIL PLAN .....	6
INDOOR TRAINING SAFETY GUIDELINES (2022/01/14) .....	7
MEDICAL FIRST CARE FORM .....	8-9
CALLOUT REVIEWS .....	10
SARCI Calendar – November 2022.....	11

## PIMA CO. SEARCH & RECOVERY DIVERS

by John Longhofer, [divers@sarci.org](mailto:divers@sarci.org)

### **DIVERS CALENDAR**

<u>Dec 11</u>	<u>09:00 Sun</u>	<b>Dry Training &amp; Equip Maintenance</b>	SARA House, 5990 N Sabino Canyon Rd
<u>Jan 08</u>	<u>09:00 Sun</u>	<b>CPR, DAN O<sub>2</sub> Provider, Dry Session</b>	SARA House, 5990 N Sabino Canyon Rd
<u>Feb 12</u>	<u>09:00 Sun</u>	<b>TBA</b>	TBA

In November, we held our annual meeting and positions were voted to remain the same for 2023. We also reviewed our annual Altitude Tables.

In December we will conduct equipment inspection and maintenance at the SARA House at Sabino Canyon. We encourage all to individually complete the online Blood Borne Pathogens course which is due by our December 11<sup>th</sup> meeting. Use this link to find the SARCI version:

[https://sarci.sharepoint.com/:p:/s/saramedical/EYUUZTXhThlCtkMqy\\_Fk4UIBkML6KYS0ptCIJshpuS7Wwg](https://sarci.sharepoint.com/:p:/s/saramedical/EYUUZTXhThlCtkMqy_Fk4UIBkML6KYS0ptCIJshpuS7Wwg)

In January, we will conduct our annual CPR, DAN O<sub>2</sub> Provider and equipment maintenance and dry training skills. February, is TBA

## SOUTHERN AZ MOUNTED SEARCH AND RESCUE

by Colleen Leon, [colleen.leon@sarci.org](mailto:colleen.leon@sarci.org)

### **SAMSAR CALENDAR**

<u>Dec 20</u>	<u>18:00 Tue</u>	<b>Board and General Meeting</b>	Forty Niner Country Club, 12000 E. Tanque Verde
---------------	------------------	----------------------------------	---

SAMSAR's five new candidates coming along. Good bunch of people. Horses are a little green but should do nicely! Doing Sunday rides to help get them in shape. Happy Thanksgiving everyone!

See you on the trail!

## SOUTHWEST RESCUE DOGS, INC.

by Karen Paquette, [karen.paquette@sarci.org](mailto:karen.paquette@sarci.org)

### **SRDI CALENDAR**

<u>Dec 07</u>	<u>18:30 Wed</u>	<b>Monthly Meeting</b>	On-line TEAMS
---------------	------------------	------------------------	---------------

We are going to be quite busy in 2023. Neil Day (from Montana) has been invited to present an air scent workshop in Pima County. Neil was our air scent instructor for this year's AZK9SARCON and quite a few AZ handlers requested that he return. In addition to Neil's air scent workshop, we will coordinate/facilitate an opportunity for AZ's HRD handlers to set training problems for each other. We are all looking forward to getting together again, training together, and getting to know each other a little bit more.

Ann Christensen is returning to Tucson in February for two weekends of training with handlers from AZ and neighboring states. This will be her fifth year to train in our area!

SARCI members are welcome to join us for training at any time. If you are interested in attending, please email us at [K9@sarci.org](mailto:K9@sarci.org), or [Karen.Paquette@sarci.org](mailto:Karen.Paquette@sarci.org), or call Karen Paquette (275-2074). SRDI's monthly meeting is the first Wednesday of each month via Teams online meeting format.

### **UPCOMING EVENTS:**

Air Scent Workshop	Jan 6-8, 2023	Tucson, AZ
Ann Christensen HRD Workshop	Feb 2023	Tucson, AZ
FACTS Level 2	Mar 2023	San Marcos, TX

## NEOTOMA COMPOSITE SQUADRON, C.A.P.

by LtCol Robert McCord, [cap@sarci.org](mailto:cap@sarci.org)

### **CAP SQUADRON CALENDAR**

<u>Sundays</u>	<u>15:30-18:00</u>	<b>Golder Ranch Fire Station #380</b>	1175 W. Magee Road, Tucson, AZ 85704
----------------	--------------------	---------------------------------------	--------------------------------------

The Civil Air Patrol's Neotoma Squadron actively participates in ongoing search and rescue missions and training exercises at the state, local and national levels. We welcome new members to join the more than 70 members of the nationally recognized emergency services Arizona Wing Ground Team.

Membership: Robert McCord, [cap@sarci.org](mailto:cap@sarci.org)

Web site: <http://www.neotomasquadron.org>

## SOUTHERN ARIZONA RESCUE ASSOCIATION



[SARA@sarci.org](mailto:SARA@sarci.org)

### SARA CALENDAR

<u>Nov 28</u>	<u>18:00 Mon</u>	<b>Personal Rope Skills</b>	Craycroft Pedestrian Bridge @ Rillito River
<u>Nov 30</u>	<u>18:30 Wed</u>	<b>Winter Skills Classroom</b>	SARA House, 5990 N Sabino Canyon Rd
<u>Dec 02</u>	<u>19:30 Fri</u>	<b>SARA General Meeting</b>	SARA House, Hybrid
<u>Dec 13</u>	<u>18:00 Tue</u>	<b>Operations-Level Tech Training</b>	SARA House, 5990 N Sabino Canyon Rd
<u>Dec 15</u>	<u>19:00 Thu</u>	<b>SARA Board Meeting</b>	SARA House, 5990 N Sabino Canyon Rd
<u>Jan 06</u>	<u>19:30 Fri</u>	<b>SARA General Meeting</b>	SARA House, Hybrid

### SABINO OVERFLOW PARKING LOT OPENS FOR WINTER

by SARC Records, [records@sarci.org](mailto:records@sarci.org)

The Sabino Gate will be open from 06:00 to 18:00 daily, beginning Saturday October 15.

### BOARD OF DIRECTORS – COVID-19 DIRECTIVES

by Joe Barr, [SARAssecretary@sarci.org](mailto:SARAssecretary@sarci.org)

Please be advised that the SARA Board has elected to remove SARA COVID restrictions and follow CDC guidelines.

The current CDC guidelines are at: <https://www.cdc.gov/coronavirus/2019-ncov/your-health/covid-by-county.html>

### COVID AND FLU

by George Simons, [george.simons@sarci.org](mailto:george.simons@sarci.org)

A reminder and heads up to all members. Influenza is rapidly ramping up in our community. Nicola and I are seeing many, many patients with the flu right now, and they are miserable. There is still time for you to get a flu shot if you have avoided it to this point. COVID is also starting to rear its head again, and both of us have had some of our colleagues become infected (even those who are immunized). Being immunized for COVID will most likely keep your illness mild, but who wants to roll that dice?

Coming down with flu or COVID will take you out of things for a while. Be on your guard. I strongly suggest wearing a mask when you are around others and cannot social distance. It will decrease your chances of catching the flu or COVID. KN95 or N95 are recommended.

Good luck, and be careful out there. Any questions, let me know.

### OEC CORNER

by Mona Johnson, [mona.johnson@sarci.org](mailto:mona.johnson@sarci.org)

The dates for the 2023 OEC Refresher Cycle A will be:

Saturday, October 21, 2023

Sunday, October 22, 2023

We will be doing a make-up refresher before the end of the year, if you did not attend either refresher and would like to be included, please let me know. We are also looking at providing an Outdoor Emergency Care Technician Course, open to all SARCI Members, in the Spring of 2023. This training will provide an Outdoor Emergency Care Technician Certification for those successfully completing the course. If you are interested in taking, or have questions about this course, please let me know.

### SARA INCIDENT MANAGEMENT TEAM

by SARA IMT, [IMT@sarci.org](mailto:IMT@sarci.org)

The Incident Management Team (IMT) provides fundamental support to search missions through the compilation of dispatch data, continuous record updates through the Initial Response Organizer (IRO) software program, and production of missing person flyers. The team is also instrumental in data-logging clues, analyzing data from dispatch and ground/air teams, developing, and updating search plans, and creating and maintaining maps in SARTopo for search missions. The group provides support before, during, and after a search mission, and some of this support can be achieved virtually.

As we all know, no one of us can always be present on a callout, virtually or otherwise. We welcome anyone interested to listen in on our Teams meetings or join us at the SARA House on the second Tues. of each month, (6PM/18:00), and to participate in our practice sessions, many of which are virtual, and case-based. We also host trainings for the various pieces of software that the team uses such as IRO, SARTopo, and WinCasie3, another integral software application used by the IMT group to support search missions.

## WINTER SKILLS CLASSROOM SESSION

by Sean Fawcett, [sean.fawcett@sarci.org](mailto:sean.fawcett@sarci.org)

The Winter Skills Classroom will be Wed 11/30 18:30 at the SARA House. The classroom session is a prerequisite for the outdoor skills session. If you have taken the classroom session in the past, you do not need to retake the classroom session to go to the outdoor session.

The classroom session will cover skills and equipment used in the winter environment. We will also cover past SARA winter rescues.

The outdoor session will not have a scheduled date. It will happen when a winter storm comes in that will drop enough snow allowing us to practice snowshoeing, stokes sled travel etc.

If you have any questions, please contact Sean.

## MEMBERSHIP COMMITTEE

by Jason Schlueter, [jason.schlueter@sarci.org](mailto:jason.schlueter@sarci.org)



**Congratulations to the class of 2022!** We had a wonderful potluck and Manny emceed the whole event. Thanks to Bill and Joy for handling all the meat and grillmaster Granny for making it edible. Prepare to see more of Adrian Moreno, Alec Moreno, Alejandro Durazo, Carlos Pantoja, Denise Whisman, John Stevens, Justine Mayo, Marina McNelly, Michael Daniel, Nicole Davis, Parker Larsen, Phillip Stevens, Rachelle Tomei, Ray Laymon, Rickie Simpson, Teri Thompson, Tony Towndrow, Tracy Klopp, Trevor Dickerson, and William Madison! A few hours later, we had a callout and we saw seven of these new candidates.

**The new hats** are in stock and they are wonderful. If your current SARA hat is hanging on by a couple threads, it might be time to upgrade. Check them out in the shop.

**The next social** will be at Crooked Tooth on Saturday, December 3<sup>rd</sup> at 16:00. Keep an eye on the master calendar for changes. Contact Jessica Houghton if you have any questions.

**Saguaro National Park is looking for feedback** on significant updates to be made to the Visitor Center parking area in Saguaro East. Share your opinions here. <https://parkplanning.nps.gov/projectHome.cfm?projectID=100617>

## **FINAL NOTE**

If you have questions about credentials, activities, or need help with your Microsoft 365 credentials, please email [records@sarci.org](mailto:records@sarci.org).



## TECHNICAL SKILLS

by Sarah Trube, [sarah.trube@sarci.org](mailto:sarah.trube@sarci.org)

**On November 28 at 18:00 at the Rillito River Park at Craycroft**, we are planning on having a Personal Rope Skills session at the Craycroft and River Pedestrian Bridge for anyone wanting to learn how to ascend/descend ropes as a part of the technician-level taskbook.

Signoffs will be available at all levels of the taskbook. Send me a quick email to let me know if you are attending and need particular sign-offs before the end of the month.

**On December 13 at 18:00 at the SARA House**, there will be a presentation covering the techniques on the Operations Taskbook. This session is appropriate for anyone in SARA, including the recent SALT class, who is interested in learning the additional skills necessary to complete the Operations Taskbook.

No RSVP necessary. Signoffs will be available at all levels (though some skills on the Operations Taskbook must be done in the field on other trainings).

As a reminder, if you recently went through SALT, you must complete another Awareness Taskbook before submitting an Operations Taskbook as a yellow shirt (but you can work on them at the same time).

I recognize there are some conflicts with these dates; if you are in danger of losing your FQ status, please reach out and I'll figure something out for you. Signoffs are also available the hour before the SARA Monthly Meetings.

Please bring full rescue packs, headlamps and helmets included. If you already own rock climbing gear like a harness, please feel free to bring it, but please don't go out and buy anything until you've seen some options in use and talked to other rescuers about what they like and don't like.

## ACCORDING TO HISTORY

by Marvin Stafford, [marvin.stafford@sarci.org](mailto:marvin.stafford@sarci.org)

*(The following is a reprint of the first in a series of twelve short articles that first appeared in SARNews from November 1994 (Vol 19, No. 11) through October 1995 (Vol 20, No. 10).*

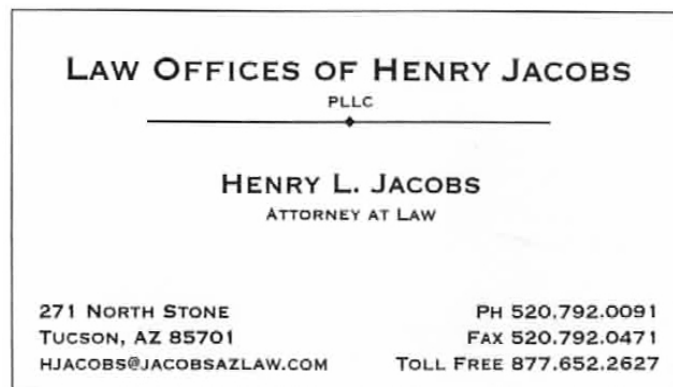
November is an important month in the history of the Southern Arizona Rescue Association. In that month, in 1958, there occurred a search and rescue operation in the Santa Rita Mountains that challenged the preparedness of the SAR community in both Pima and Santa Cruz Counties. The upshot of that experience is the organization that we know today.

It is my intention to use this space to review some of the problems and solutions encountered on that operation, which I shall call, "The First Search". There are still two active members in SARA who participated in "The First Search", Tom Harlan and myself. History is a little different according to who is telling it. This will be my version.

Intended future topics will be: Organization of Volunteer Resources; Callout Procedures; Training and equipment; Communication; Politics, and other topics as readers show an interest.

### **About the Author**

While attending high school in Tucson, in Pima County, Arizona, **Marvin Stafford** got his start in Search and Rescue as a member of a Boy Scout Explorer Post which called itself a 'Search and Rescue Post'. They practiced first aid, mountaineering, and some simple technical evacuation procedures. They did not get much business as there was not a mechanism in place for volunteers to assist the Sheriff's Department with their responsibility. When a major search incident occurred, involving three fellow Boy Scouts, in November, 1958, the post played a significant role. Marvin joined the Southern Arizona Rescue Association, as soon as he was old enough, in 1960. While an undergraduate engineering student at the University of Arizona, Marvin's summer job was with the Forest Service doing fire control work in the mountains near Tucson. There, he did SAR work in a Forest Service uniform; a qualified volunteer team was not yet a reality. Marvin has served on the SARA Board of Directors and has been the Chairman for the Arizona Region of MRA.



## **CATALINA RANGER DISTRICT TRAIL PLAN (draft)**

by Mykle Raymond, [mykle.raymond@sarci.org](mailto:mykle.raymond@sarci.org)

“The Santa Catalina Ranger District of the Coronado National Forest has developed the preliminary *Draft Santa Catalina Trail Plan* identifying and prioritizing projects over the next 15 years. The overall goal of the plan is to create a trail system that is ecologically, economically, and socially sustainable.”

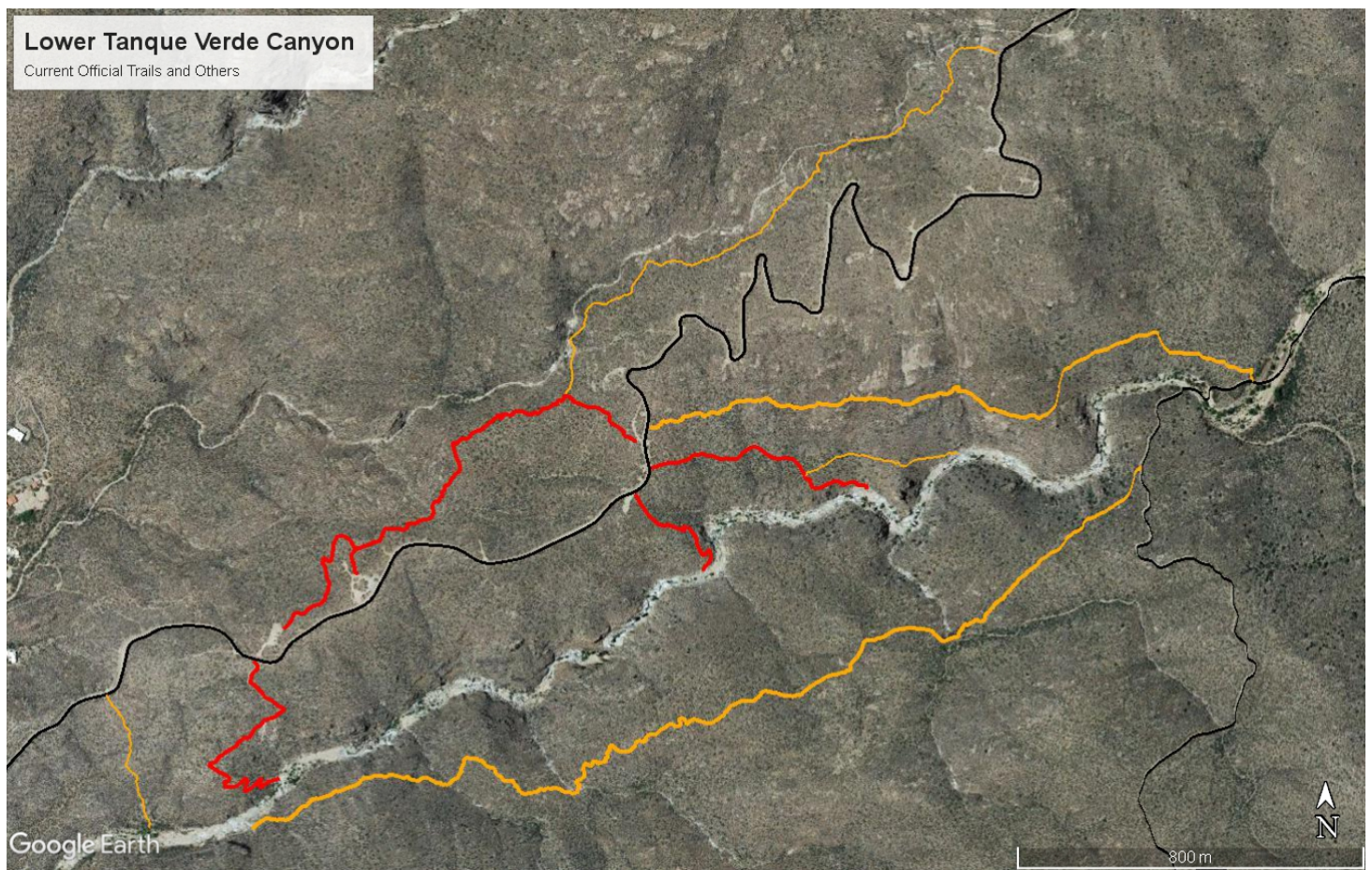
The Forest Service Notice is at: <https://www.fs.usda.gov/detail/coronado/news-events/?cid=FSEPRD1071666> and includes links to the plan and map files. *(Note: both virtual and public presentations have been held)*

Incorporated in the plan are previously completed plans for replacing roads and facilities in Marshall Gulch, and plans for improvements and new trails in the Lower Tanque Verde Canyon area. These projects appear to be under way.

During the Friends of Redington Pass (FORP) cleanup in November, a trail crew completed a new trail on the north side of Redington Road that incorporates part of the Scorpion social trail and extends the trail to the “SARA Trail” parking area and to the area where an upper parking area will be constructed.

The crew are reported to have done some work on the SARA Trail switchbacks, where people have been getting off trail and calling for help.

This map shows official trails in red and social trails in orange, including the new trail on the north side of the road. The new trail is (relatively) smooth, 36” wide, and appears to be suitable for horses.



This document presents the safety guidelines that shall be implemented for indoor training during the COVID-19 pandemic.

**Before Class Health Screening:**

If you have any of the following conditions please consider not attending the event:

- Fever (Temperature of 100.4 or greater) plus cough and shortness of breath/ difficulty breathing
- Chills
- Congestion or runny nose
- Muscle pain
- Sore throat
- New loss of taste or smell
- Diarrhea
- Nausea or vomiting
- Fatigue

**During Class Precautions:**

The following precautions will be used during time in the classroom:

- Maintain social distancing of 6 feet or more when possible
- Genuine N95 or KN95 masks shall be worn
- Reminders will be given to wash or sanitize hands

**Mask Care:**

- Replace when soiled, wet, or damaged
- When not in use, store/dry in paper bag

**Hands on Scenario Precautions:**

- Masks and eye protection will be required
- Nitrile gloves will be used and changed in between patient contacts

**Classroom Hygiene:**

- All equipment and indoor surfaces used will be cleaned and sanitized after/between use
- Tables, chairs, equipment will be sprayed down with disinfectant before/after training
- All unneeded equipment and furniture will be kept separate and clean
- Medical equipment will be disinfected between patient contacts
- Instructors will thoroughly wipe down and disinfect surfaces after class
- During indoor meetings or trainings air vent fans will be set to "On" throughout the building.

**Post-Training COVID-19 Exposure or Diagnosis**

- Should a student develop symptoms or receive positive COVID-19 test results within 14 days after attending training, it is recommended that they notify the Medical Chairs ([SARAMedicalChairs@sarci.org](mailto:SARAMedicalChairs@sarci.org)) and advise of their current symptoms and/or positive test.
- Should the Medical Chairs become aware of a student with symptoms/positive test, the Medical Chairs will work with that student and/or Records to determine what trainings or calls that person attended in the previous 14 days.
- The Medical Chairs will contact persons who attended the same trainings as a person reporting positive symptoms/test results in the past 14 days and advise that they may have been exposed to someone with COVID-19 and should contact their doctor should they develop symptoms or have any questions. Persons will be advised of what symptoms to watch out for (above) and to get a COVID-19 test if necessary. The identity of the person reporting positive symptoms/test results will be kept confidential and will not be shared with training attendees.
- Persons who develop symptoms and/or receive a positive test should follow current isolation recommendations, as directed by ADHS. They will be permitted to attend trainings/calls once the recommended isolation period and time since last symptoms have been satisfied.



## MEDICAL FIRST CARE FORM

by George Simons, [george.simons@sarci.org](mailto:george.simons@sarci.org)

This form is provided by the Sheriff's department and should be completed on all medical calls. I would encourage its use on other calls, such as searches, to document the condition of our victim even if uninjured and in no distress. One can find fault with any first care form. I'm sure some of you can find things to improve on this one, but take a deep breath and just go with what we have.

The good thing about this form is that it is easy to fill out. The headings are self-explanatory (I have always been told to never say that, but I think it is true here.). Become familiar with the form. You do not have to carry one and fill it out at the scene. You can take notes and fill the form out after the call. They are kept in all of the trucks.

Keep in mind your chart is a snapshot of the encounter and serial exams/vital signs. It is impossible to document every second of the time spent with the patient short of taking a video of the entire time we are with them.

Important things to document (other than everything, of course) include a brief history of the current problem, past medical history, current medications, and allergies. I avoid open ended questions here. I ask about specific conditions. Do you have heart problems, diabetes, lung problems? Do you take a blood thinner? Etc., etc. Then a primary survey, the form has a nice outline of what needs attention. The secondary survey part of the form is also a good outline of what to address. It works best if one person does the exam and reexams of the patient, and a separate person acts as scribe. The second person can also hand dressings, etc. to the person who actually has hands on the patient. This makes sure someone with uncontaminated hands is digging in the med kit.

In the face of a complicated trauma patient, take a deep breath and take your own pulse. Don't worry about missing a small laceration here and there, or that sprained finger. The "can't miss" items include vital signs (repeat at appropriate intervals depending on situation) and continuous monitoring of the primary survey headings (A, B, C, D, E).

When you turn the patient over to another provider, higher level of care, ambulance, helicopter crew, etc., it is VERY, VERY important that you note the time of the handoff, and a brief note about the patient's condition at that time. For example, If the patient shows up at the hospital and is noted to be unable to move their legs, everyone is going to want to know when that happened and fingers will be pointed at all the caregivers. If your note shows the patient was neurologically intact and moving all extremities at the time of handoff, you are protected.

There are places on the back of the first page of the form for obtaining consent for treatment and refusal. Verbal with a witness is okay if the circumstances do not allow for signatures, or if you do not have the form in hand. Refusals can be tricky. The person with the highest medical certification should be involved in this, and law enforcement may need to step in. For example, we can't leave an intoxicated person with an open leg fracture in the bottom of Tanque Verde Canyon, no matter how adamantly they refuse or threaten us. The standard of care is what would a reasonable person do in the same circumstances. Remember, you or one of the deputies can always confer with medical control (and should in these cases). You will get in trouble for not taking care of someone. You will not get in trouble for taking care of someone.

Completed forms may be given to a truck driver, or you can slide it under the locked door of the medical storeroom. Remember this is part of the patient's medical record and must be protected.

The form is shown on the next page. Questions? Let me know.







Case #: \_\_\_\_\_

☐ SAR☐ TEMS☐ SARA

Time: \_\_\_\_\_

**Check if Present:**☐ Tobacco☐ Alcohol☐ Drugs

Location: \_\_\_\_\_

Patient Name: \_\_\_\_\_ DOB: \_\_\_\_\_ Age: \_\_\_\_\_ ☐ M ☐ F Weight: \_\_\_\_\_ (lbs.)

Chief Complaint: \_\_\_\_\_

Description of Injury / Illness: \_\_\_\_\_

Allergies: ☐ NoneMedications: ☐ NoneMedical History: ☐ None**Primary Survey:****Consider Rapid Evacuation if Compromise in Primary Survey**Airway: ☐ Intact ☐ Apenic ☐ ObstructedBreathing: Lung Sounds ☐ Clear ☐ Decreased R/L ☐ Wheezing R/LCirculation: **Heart Sounds** ☐ Normal ☐ Rapid ☐ Slow ☐ Diminished**Pulses** ☐ Present ☐ Absent - Carotid/Femoral/Radial/FootDisability (neurologic): **A V P U** - Weakness / Numbness ☐ NoneEnvironment / Exposure of Injury: ☐ Hypothermia ☐ Hyperthermia**Secondary Survey:****Document Pertinent Positives / Negatives**Head: ☐ Head AtraumaticEyes / ENT: ☐ Pupils Equal / Unequal **R** mm **L** mm ☐ No injury ☐ InjuryNeck: ☐ Non-Tender, No Deformity ☐ Tender / DeformityChest: ☐ Non-Tender ☐ No Crepitus ☐ Tender / CrepitusAbdomen: ☐ Non-Tender ☐ Tender - Location: \_\_\_\_\_Pelvis: ☐ Non-Tender, Stable Compression / Roll ☐ Tender / UnstableSpine: ☐ Non-Tender, No Deformity ☐ Tender / Deformity - Location: \_\_\_\_\_

Skin: Temp: \_\_\_\_\_ Moisture: \_\_\_\_\_ Color: \_\_\_\_\_ Cap refill: &lt; 2 sec &gt; 2 sec

Extremities: ☐ No Injury ☐ InjuryNeurologic: ☐ Sensory - Motor Intact All Extremities ☐ Abnormal**GLASGOW****Eyes**

Alert 4

Verbal 3

Pain 2

None 1

**Verbal**

Oriented 5

Confused 4

Inappropriate 3

Garbled 2

None 1

**Motor**

Obeyes 6

Local 5

Withdraws 4

Decorticate 3

Decerebrate 2

None 1

**TOTAL:**

	Time	Temp	Pulse	Blood Pressure	Breath Rate	Pulse Ox (%)	FSBS
<b>Vital Signs</b>							

<b>Treatment</b>	<input type="checkbox"/> Cervical Collar	<input type="checkbox"/> Backboard	<input type="checkbox"/> Warming / Cooling	<input type="checkbox"/> Oxygen: _____ L by NC/NRB
	<input type="checkbox"/> Splint: _____			
	<input type="checkbox"/> Bandaging: _____			
	<input type="checkbox"/> Other: _____			
<input type="checkbox"/> Hydration: Oral / IV Time: _____ Site: _____ Solution: <input type="checkbox"/> NS <input type="checkbox"/> LR <input type="checkbox"/> Electrolyte Amt: _____				

Time	Medication	Dose	Route	Result

**Vital Signs and Treatment Continued on Back**

Method of Extraction: \_\_\_\_\_

Accepting Provider (print / sign): \_\_\_\_\_

Disposition: ☐ Home ☐ Refusal ☐ Transport / HospitalCondition: ☐ Good ☐ Stable ☐ Critical ☐ Deceased

Deputy (print / sign): \_\_\_\_\_

Disposition Time: \_\_\_\_\_

**CALLOUT REVIEWS**by Mykle Raymond, [SARCInewsletter @ sarci.org](mailto:SARCInewsletter@sarci.org)

Date	Vol/Hrs/ Problem	Location	Resources
------	------------------	----------	-----------

**Mission Hrs now show total portal-to-portal times (not Rdvs). Mission times now show Field IN/OUT times (not Rdvs).**

**Wed Oct 05** 4/ 20/ 23yf Walkaway **Picture Rocks** **EvoII Mavic2**  
*No field times* A mentally handicapped woman was missing from her residence in Picture Rocks. This was more of a detective case with SAR Officers assisting. Drones were requested to document the neighborhood. A section of State Land is nearby, and the UAS team flew portions of this area for training over the following days. (UPDATE: She left on her own and is safe.)

**Mon Oct 17** 10/ 23/ 30ym ankle injury **Tanque Verde Canyon, Rincons** **RMFD**  
 16:40 – 17:30 A male slipped on wet rock and injured his ankle. His companion called for help and escorted teams. Meanwhile he was scooting on his bottom and was met at the base of the Main Trail. He was lightweight, so the stokes carry to the trailhead was quick.

**Wed Oct 19** 9/ 10/ 26yf injured **Redington Road, Catalinas** **RMFD**  
 18:55 – 19:00 An impaired female was reported to be in the area of the Lower Tanque Verde Canyon parking lot (SARA trailhead). She was found north of the parking lot, unable to walk. She was carried a short distance to the road.

**Sat Oct 22** 14/ 97/ Hikers exhausted **Agua Caliente Canyon, Catalinas** **Mavic RMFD**  
 10:30 – 15:20 Two hikers were on the loop from Gnat Tank to Milagrosa Trails when one was unable to continue. Teams reached them at the crossing of Agua Caliente Canyon. The ill hiker recovered enough to walk slowly, and was met by a team who provided an IV. She was carried by stokes to the forest boundary, where a recon team led a route to old development roads, and down to vehicles.

**Sun Oct 30** 20/ 113/ 26ym hiker missing **Mica Mtn, Rincons** **Ranger58**  
 11:10 – 13:35 One of four hikers became separated on top of Mica Mtn during an overnight trip up Italian Spring Trail to Manning Camp. Teams covered the trail from Redington Road, and other teams flew to Manning Camp. The hiker was walking out of the cabin as a team arrived, having missed his group by about twenty minutes (there are several trails on top of Mica Mtn).

**Sun Nov 13** 24/ 68/ 84yf walkaway **Tucson Estates, Tucson Mtns** **Sheriff1 Survey**  
 18:35 – 19:25 A woman left her residence to walk to meet a nearby friend. She was also familiar with trails at the north end of Tucson Estates, so when she did not arrive as expected and initial family searches were unsuccessful, teams started to cover the nearby trails. A family member found her near Kinney Road.

**Sat Nov 19** 18/ 139/ 2 Hunters stranded by dark **Romero Canyon, Catalinas** **Survey Sheriff1**  
 21:10 – 03:40 Two hunters became stranded by dark and terrain in a canyon north of Romero Canyon. Initial coordinates were in a familiar area downstream of Romero Pools, but nothing was found when teams approached the area from different angles. A review of coordinates moved the location north almost a mile. Teams returned to the trailhead and everyone headed off on an even more challenging route. They made voice and visual contact with the subjects but due to terrain chose to return to the trailhead. Sheriff1 retrieved the subjects after sunrise, and they were in good condition.

**Sun Nov 20** 9/ 94/ 29yf hiker stranded by dark **Ventana Trail, Catalinas** **Survey**  
 19:40 – 04:45 A hiker had difficulty following the trail while returning from The Window, and then the sun set while she was still near the top of the canyon. A team found her near the trail and all returned safely.

2022 Totals	Activities	People	Hours	Hrs/Per	Last 12 Mos
Missions	70	793	3430	4.3	76
Trainings	159	2313	9658	4.2	164
Meetings	107	1032	2166	2.1	114
Public Relations	11	40	182	4.6	11
Special Events	12	81	873	10.8	12
Activities	95	412	1868	4.5	105
<b>TOTALS</b>	<b>454</b>	<b>4671</b>	<b>18177</b>	<b>3.9</b>	<b>482</b>

20221121

## SARCI Calendar–2022-2023

<i>Monday</i>	<i>Tuesday</i>	<i>Wednesday</i>	<i>Thursday</i>	<i>Friday</i>	<i>Saturday</i>	<i>Sunday</i>
<i>Nov 28</i> <b>Personal Rope Skills</b> (18:00)	<i>Nov 29</i>	<i>Nov 30</i> <b>Winter Skills Class</b> (18:30)	<i>Dec 01</i>	<i>Dec 02</i> <b>SARA Meeting</b> (Hybrid: 19:30)	<i>Dec 03</i> <b>SARA Training</b> TBD	<i>Dec 04</i>
<i>Dec 05</i>	<i>Dec 06</i>	<i>Dec 07</i> <b>SRDI Meetings</b> (On-line: 18:30)	<i>Dec 08</i>	<i>Dec 09</i>	<i>Dec 10</i>	<i>Dec 11</i> <b>Divers Training</b> (09:00)
<i>Dec 12</i>	<i>Dec 13</i> <b>Operations Tech Training</b> (18:00)	<i>Dec 14</i>	<i>Dec 15</i> <b>SARA Board</b> (On-line: 19:00)	<i>Dec 16</i>	<i>Dec 17</i>	<i>Dec 18</i>
<i>Dec 19</i>	<i>Dec 20</i> <b>SAMSAR Meeting</b> (18:00)	<i>Dec 21</i>	<i>Dec 22</i>	<i>Dec 23</i>	<i>Dec 24</i> <b>CHRISTMAS EVE</b>	<i>Dec 25</i> <b>CHRISTMAS</b>
<i>Dec 26</i>	<i>Dec 27</i>	<i>Dec 28</i>	<i>Dec 29</i>	<i>Dec 30</i>	<i>Dec 31, 2022</i> <b>NEW YEAR'S EVE</b>	<i>Jan 01, 2023</i> <b>NEW YEAR'S DAY</b>
<i>Jan 02</i>	<i>Jan 03</i>	<i>Jan 04</i> <b>SRDI Meetings</b> (On-line: 18:30)	<i>Jan 05</i>	<i>Jan 06</i> <b>SARA Meeting</b> (Hybrid: 19:30)	<i>Jan 07</i> <b>SARA Training</b> TBD	<i>Jan 08</i> <b>Divers Training</b> (09:00)
<i>Jan 09</i>	<i>Jan 10</i>	<i>Jan 11</i>	<i>Jan 12</i>	<i>Jan 13</i>	<i>Jan 14</i>	<i>Jan 15</i>
<i>Jan 16</i>	<i>Jan 17</i> <b>SAMSAR Meeting</b> (18:00)7	<i>Jan 18</i> <b>SARCI Board</b> (Hybrid: 19:30)	<i>Jan 19</i> <b>SARA Board</b> (On-line: 19:00)	<i>Jan 20</i>	<i>Jan 21</i>	<i>Jan 22</i>
<i>Jan 23</i>	<i>Jan 24</i>	<i>Jan 25</i>	<i>Jan 26</i>	<i>Jan 27</i>	<i>Jan 28</i>	<i>Jan 29</i>
<i>Jan 30</i>	<i>Jan 31</i>	<i>Feb 01</i> <b>SRDI Meetings</b> (On-line: 18:30)	<i>Feb 02</i>	<i>Feb 03</i> <b>SARA Meeting</b> (Hybrid: 19:30)	<i>Feb 04</i> <b>SARA Training</b> TBD	<i>Feb 05</i>



**SEARCH AND RESCUE COUNCIL, INC.**

P.O.Box 44231, Tucson AZ 85733

Meet 3<sup>rd</sup> Wed 19:30 (Jan, Apr, Jul, Oct), details inside.

**NEOTOMA COMPOSITE SQUADRON, C.A.P.**

8540 N. Wanda Road, Tucson AZ 85704

Meet each Sunday 15:30-18:00, details inside

**PIMA COUNTY SEARCH AND RECOVERY DIVERS**

P.O.Box 13961, Tucson AZ 85732-3961

Meet 2<sup>nd</sup> Sun 09:00, details inside.

**SOUTHERN ARIZONA MOUNTED SEARCH AND RESCUE**

Details inside.

**SOUTHERN ARIZONA RESCUE ASSOCIATION**

P.O.Box 12892, Tucson AZ 85732-2892

Meet 1<sup>st</sup> Fri 19:30, SARA House, 5990 N Sabino Canyon Rd.

**SOUTHWEST RESCUE DOGS**

P.O.Box 64120, Tucson AZ 85728-4120

Meet 2<sup>nd</sup> Wed 19:00, SARA House, 5990 N Sabino Canyon Rd.

**SARNEWS** Published monthly by Search and Rescue Council, Inc., a volunteer, non-profit organization. It is distributed free to members of SARCI affiliated groups and other qualified search and rescue organizations.

Send editorials, letters and manuscripts to:

e-mail: [sarcinewsletter@sarci.org](mailto:sarcinewsletter@sarci.org) (preferred)

US Mail: P.O.Box 44231, Tucson AZ 85733

The editors assume no liability for inaccurate contributions. Permission to photocopy and reproduce is granted provided the material is used non-commercially, published without editing and with complete source citation. Forward notification of usage to the editors.

Advertisement rates are \$10.00/month or \$100/year for a 3.5"x2" (business card) size graphic. Subscription rates are \$10.00/year for non-qualified individuals or organizations.

**Staff:**

Dave Burnett 730-8655 [dave.burnett@sarci.org](mailto:dave.burnett@sarci.org)

Mykle Raymond 404-9251 [mykle.raymond@sarci.org](mailto:mykle.raymond@sarci.org)

Deb Heilig [deb.heilig@sarci.org](mailto:deb.heilig@sarci.org)

Joe Barr 331-5666 [joe.barr@sarci.org](mailto:joe.barr@sarci.org)